

PORTRAIT
OF THE
King

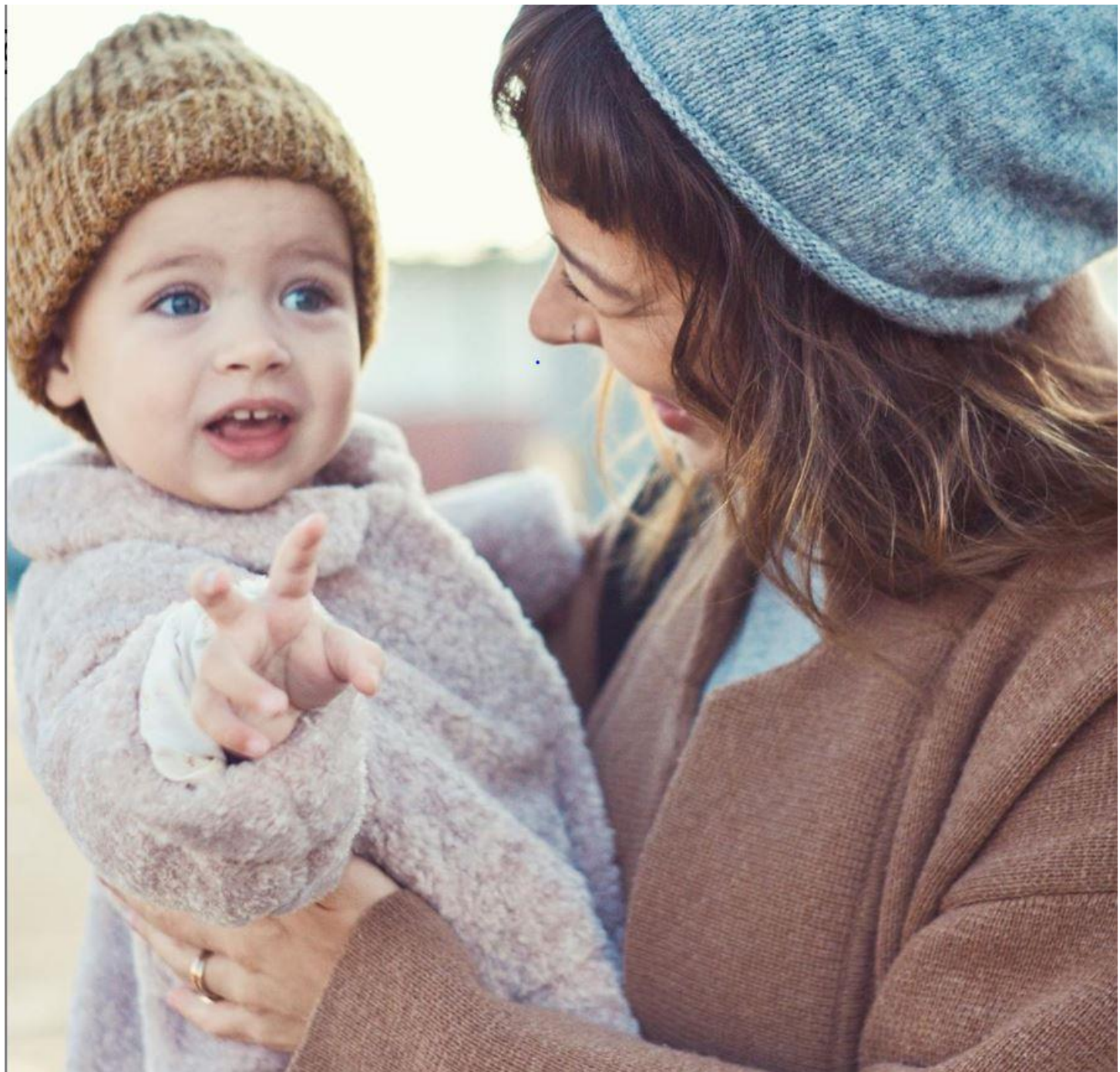


ADMINISTRATION

“What is Needed for Service?”

MATTHEW 20:29-34





“We’re asking for prayer. We believe in a Jesus who died and conclusively defeated every grave, holding the keys to resurrection power. We are asking for bold, unified prayers from the global church to stand with us in belief that He will raise this little girl back to life. ...

Kally Heiligenthal, calling the church to pray for her daughter’s resurrection



“... Her time here is not done, and it is our time to believe boldly, and with confidence wield what King Jesus paid for. It’s time for her to come to life.”

Kally Heiligenthal, calling the church to pray for her daughter’s resurrection



- They were immediate, complete, and irreversible.
- They were public.
- They took place in ordinary places and on unplanned occasions.
- Mostly untreatable illnesses were healed.
- They were undeniable.

How Jesus Healed



- In Mark 10:46, we don't read of 2 blind men, but 1 blind man and his name is given – Bartimaeus. Luke 18:35 doesn't give the man a name.
- Bartimaeus was probably the more well-known of the 2 men.

**How Many Blind Men
were There?**



- Matthew 20:29 says that Jesus *was leaving* Jericho and Mark 10:46 and Luke 18:35 says Jesus *was coming* to Jericho.
- Jesus was walking from the older part of Jericho to the new part of town.



What about Jericho?

KEY POINT:

What drives us to serve is compassion.



KEY POINT:

What **drives** us to serve is **compassion**.

LAST WEEK:

The nature of true greatness is serving others.



...Do not look on his appearance or on the height of his stature, because I have rejected him. For the LORD sees not as man sees: man looks on the outward appearance, but the LORD looks on the heart

1 Samuel 16:7



I. Their Deplorable Condition (vs. 29-30)

Outline of Matthew 20:29-34



- 15 miles SW of Jerusalem, 3,300 feet lower in elevation
- where Rahab helped Hebrew spies (Joshua 2)



The City of Jericho

- Medicine from balsam bushes was used for treating blindness
- The blind had built a community here.

**Why Did the Blind Congregate
in Jericho?**



- Sermon on the Mount (Matthew 5:7)
- *“Sheep without a shepherd”* (Matt 9:27)
- Parable of the unforgiving servant (Matthew 18:33)
- Demon-possessed (Matthew 15:22; 17:15; Mark 5:19)
- 10 lepers (Luke 17:13)
- Parable of the rich man and Lazarus (Luke 16:24)
- Paul’s testimony (I Timothy 1:13-16)

Examples of the Mercy of Jesus



I. Their Deplorable **Condition** (vs. 29-30)

II. A **Difficult** Crowd (vs. 31a)

Outline of Matthew 20:29-34



- I. Their Deplorable **Condition** (vs. 29-30)
- II. A **Difficult** Crowd (vs. 31a)
- III. The Blind Men's Determined **Request** (vs. 31b)

Outline of Matthew 20:29-34



- I. Their Deplorable **Condition** (vs. 29-30)
- II. A **Difficult** Crowd (vs. 31a)
- III. The Blind Men's Determined **Request** (vs. 31b)
- IV. A Divine **Miracle** (vs. 32-34)

Outline of Matthew 20:29-34



KEY POINT:

What drives us to serve is compassion.





“To love to preach is one thing, to love those to whom we preach is quite another. The trouble with some of us is that we love preaching, but we are not always careful to make sure that we love the people to whom we are actually preaching. If you lack this element of compassion for the people ...



D. Martyn Lloyd-Jones, *Preaching and Preachers*



“...you will also lack the *pathos* which is a very vital element in all true preaching. Our Lord looked out upon the multitudes and ‘saw them as sheep without a shepherd,’ and was ‘filled with compassion.’ And if you know nothing of this you should not be in a pulpit.”



D. Martyn Lloyd-Jones, *Preaching and Preachers*

⁹ Go, and say to this people: 'Keep on hearing, but do not understand; keep on seeing, but do not perceive.'

¹⁰ Make the heart of this people dull, and their ears heavy, and blind their eyes; lest they see with their eyes, and hear with their ears, and understand with their hearts, and turn and be healed.

Isaiah 6:9-10



22 The eye is the lamp of the body. So, if your eye is healthy, your whole body will be full of light, 23 but if your eye is bad, your whole body will be full of darkness. If then the light in you is darkness, how great is the darkness!

Matthew 6:22-23



... We are his workmanship, created in Christ Jesus for good works, which God prepared beforehand, that we should walk in them.

Ephesians 2:10

